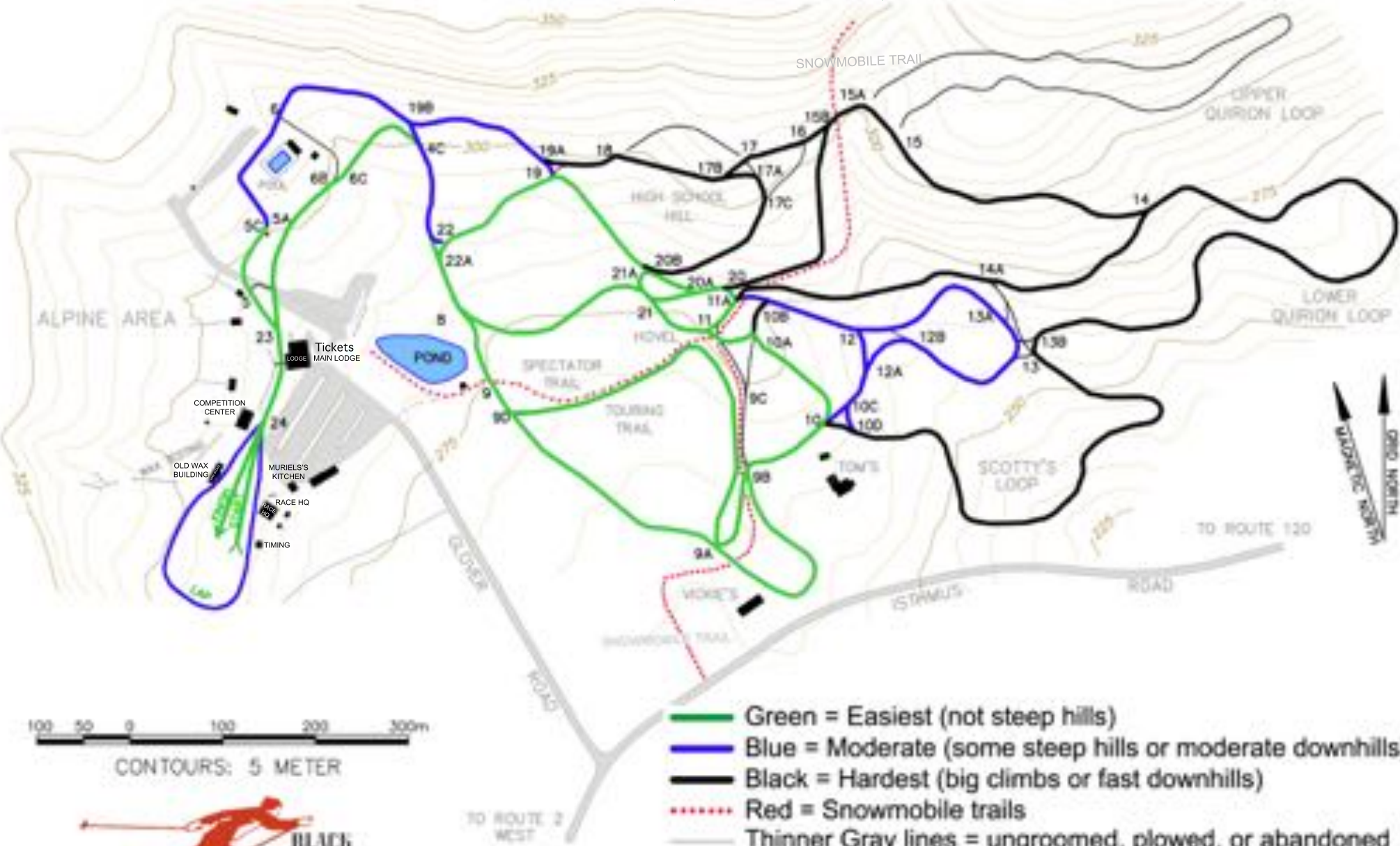




JOHN RODERICK TRAIL SYSTEM BROOMHALL STADIUM



NORDIC TRAIL DIFFICULTY MAP



CONTOURS: 5 METER

- Green = Easiest (not steep hills)
- Blue = Moderate (some steep hills or moderate downhills)
- Black = Hardest (big climbs or fast downhills)
- Red = Snowmobile trails
- Thinner Gray lines = ungrooved, plowed, or abandoned

